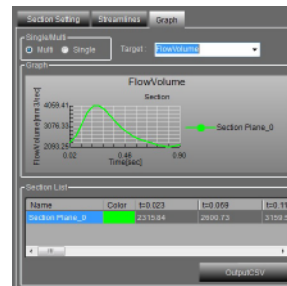
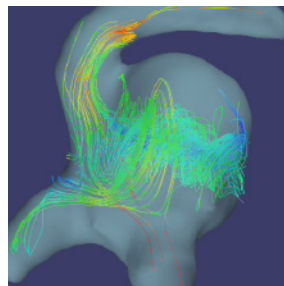
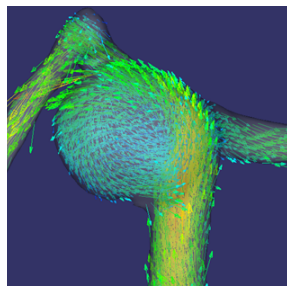
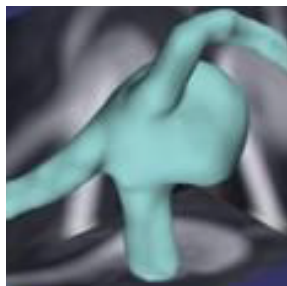


F

Flova

Flow Visualization and Analysis

'Flova' is the software for visualizing and analyzing the blood vessel flow, using the 4D-flow data of MR Imaging. 'Flova' enables to directly analyze the blood flow in human body and indicate the flow velocity distributions and the wall shear stresses in the blood vessel, which is useful for clinical therapy such as the intravascular treatment of aneurysms.



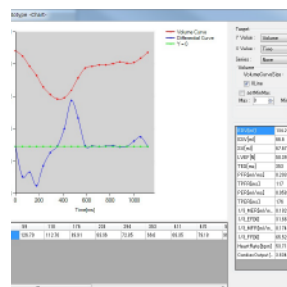
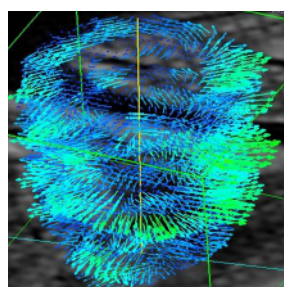
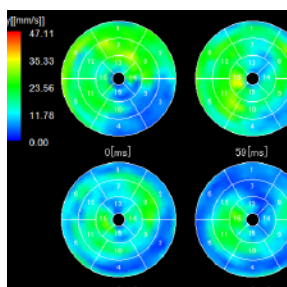
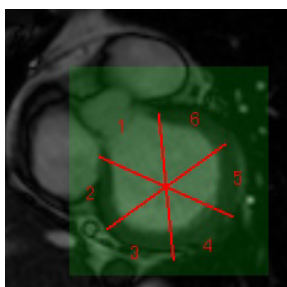
C

CardioDyna

Dynamic Analysis for Myocardium

'CardioDyna' is the software based on MR Imaging data (cine/Tagged MRI), to obtain and view the entire myocardium movement in 3D.

'CardioDyna' makes it possible to generate the 3D shapes modeling, obtain the cardiac volume curves and evaluate the quantity of displacement and velocity by the 3D motion of the myocardium.



P

PPMotion

Particle Plane Motion

'PPMotion' is the software based on MR Imaging data(cine/Tagged MRI) of one slice, to analyze motion of tag or characteristic point.

'PPMotion' corresponds to the display of displacement vector of details on 2D screen and to show graphically of displacement vector.

